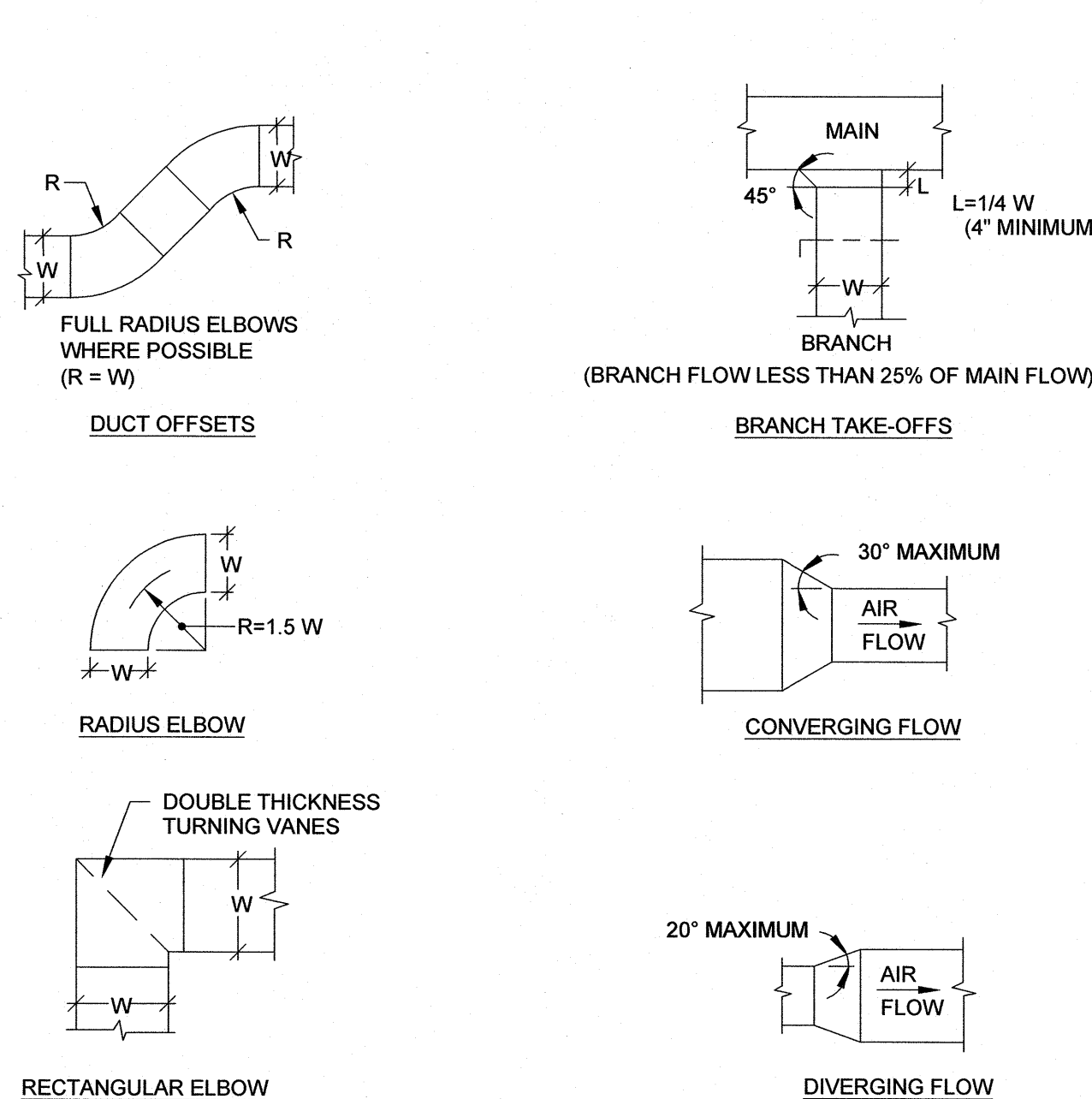


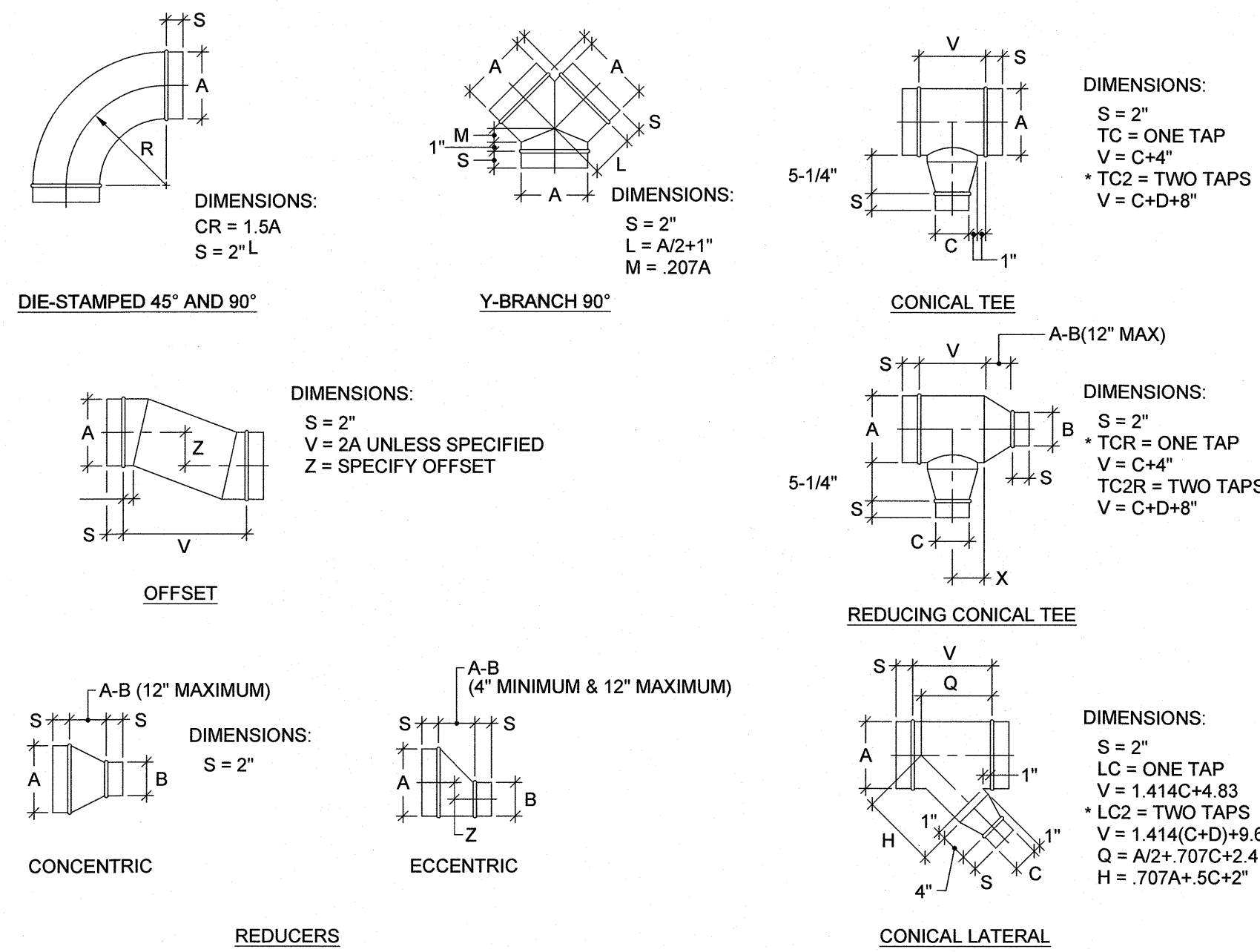
1 - TYPICAL DIFFUSER CONNECTION DETAIL

NOT TO SCALE



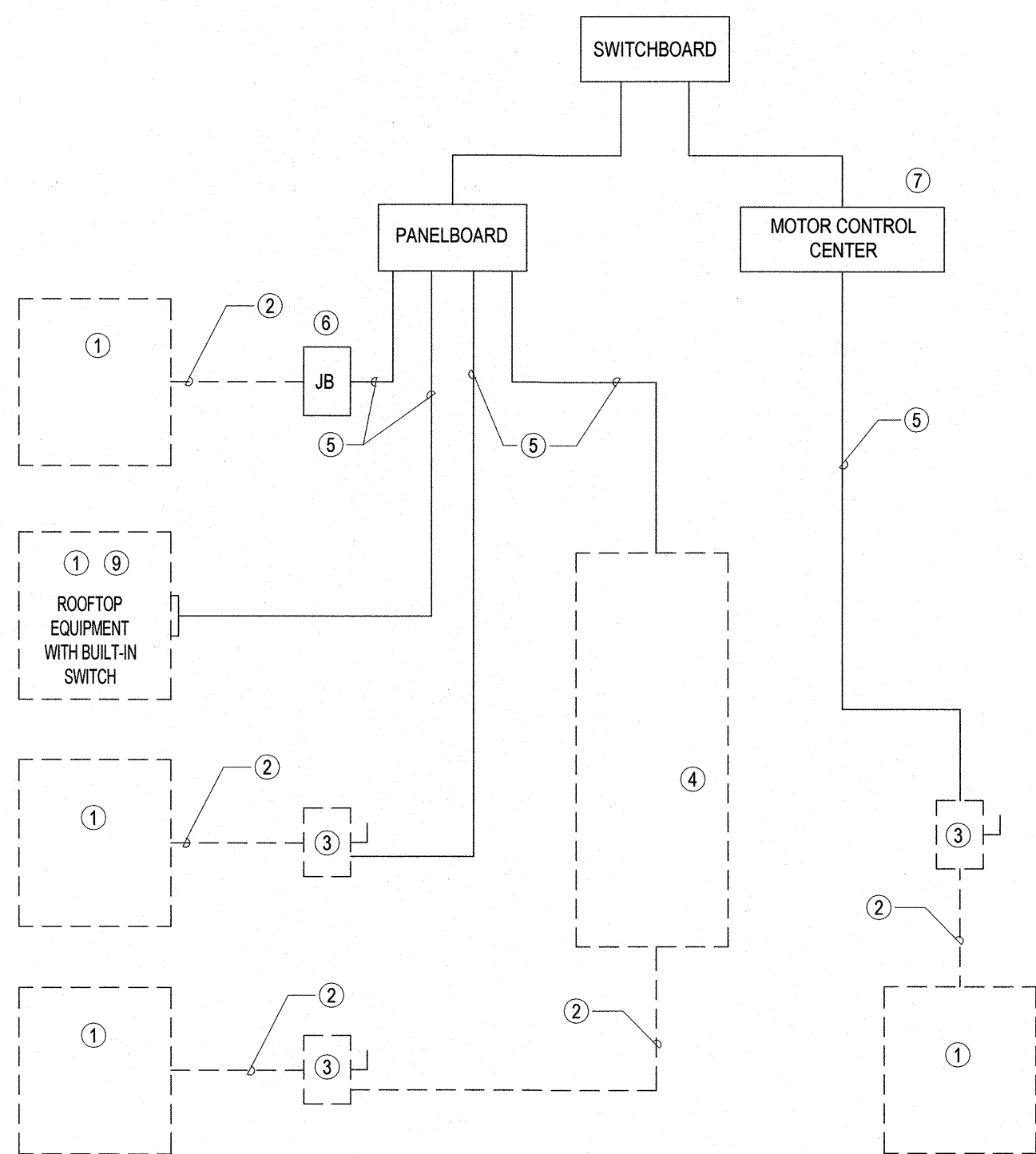
3 - RECTANGULAR DUCT FITTING DETAILS

NOT TO SCALE



4 - ROUND DUCT FITTING DETAILS

NOT TO SCALE

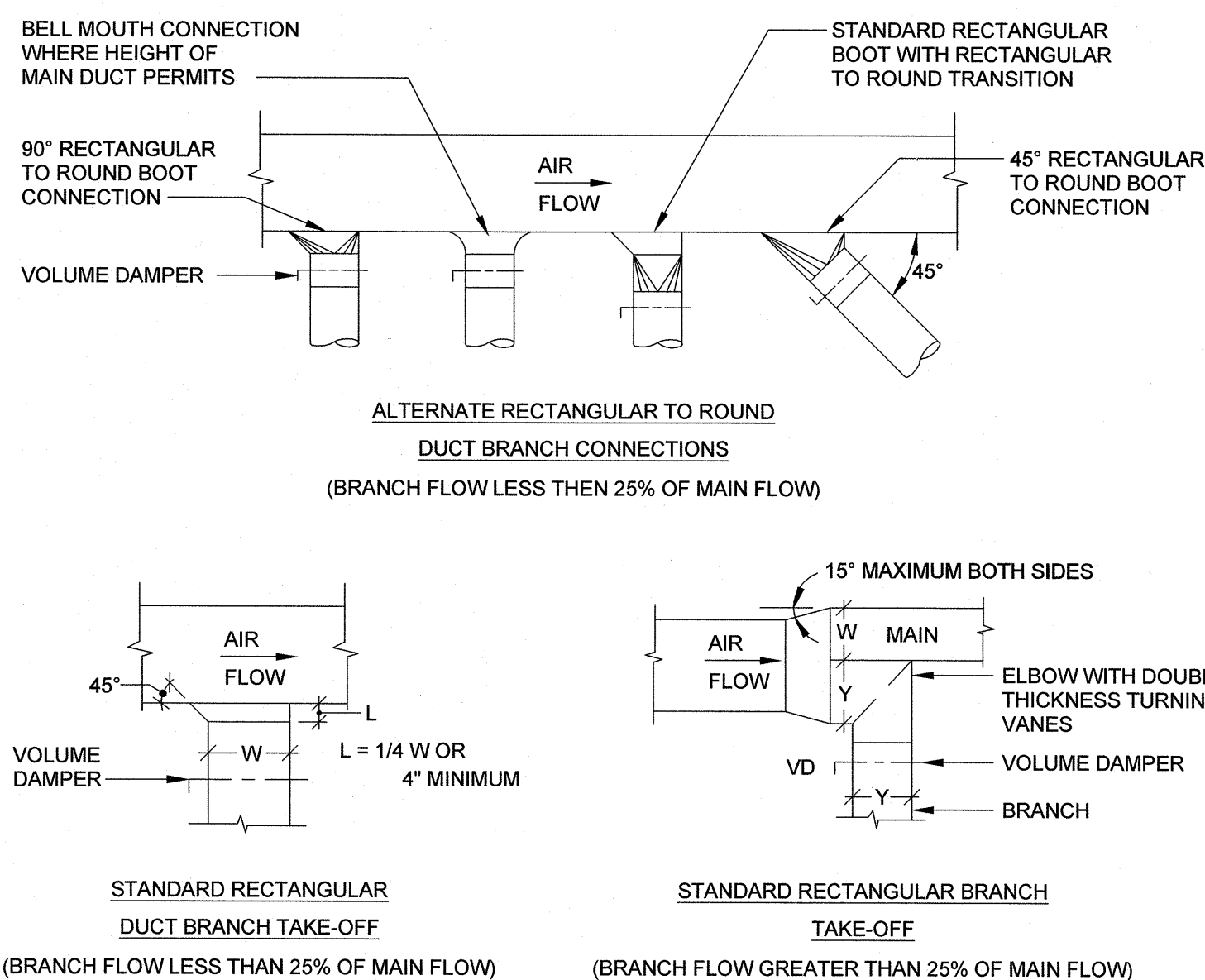


2 - MECHANICAL EQUIPMENT CONNECTION DETAIL

NOT TO SCALE

MECHANICAL NOTES

- ① EQUIPMENT OF TRADES OTHER THAN ELECTRICAL.
- ② CONDUIT AND WIRING BY HVAC, PLUMBING CONTRACTOR OR OTHER TRADES.
- ③ IF AN ADDITIONAL DISCONNECT IS REQUIRED BY NEC, IT SHALL BE PROVIDED AND INSTALLED BY THE EQUIPMENT CONTRACTOR.
- ④ A COMBINATION STARTER OR VFD MAY BE USED IN LIEU OF A SEPARATE DISCONNECT SWITCH AND STARTER. LOCATE ADJACENT TO EQUIPMENT.
- ⑤ FEEDER CIRCUIT WIRING AND CONDUIT IN ELECTRICAL WORK. SEE PANELBOARD SCHEDULES FOR WIRE AND BREAKER SIZES.
- ⑥ JUNCTION BOX MAY BE SHOWN ON ELECTRICAL PLANS FOR SOME EQUIPMENT. IF NO STARTER OR DISCONNECT IS SUPPLIED, A JUNCTION BOX SHALL BE INSTALLED ADJACENT TO EQUIPMENT. THE ELECTRICAL CONTRACTOR SHALL PROVIDE LINE SIDE WIRING TO THE JUNCTION BOX. LOAD SIDE WIRING WILL BE PROVIDED BY MECHANICAL CONTRACTOR OR OTHER TRADES.
- ⑦ PROJECTS UTILIZING AN MCC, THE STARTER CB, OR VFD IN THE MCC ARE PROVIDED BY THE ELECTRICAL CONTRACTOR.
- ⑧ IN ALL CASES THE EQUIPMENT CONTRACTOR SHALL MAKE FINAL CONNECTIONS, START UP AND TEST EQUIPMENT.
- ⑨ IF THE ROOF TOP FAN IS NOT PROVIDED WITH BUILT IN SWITCH, THE ELECTRICAL CONTRACTOR SHALL PROVIDE A DISCONNECT SWITCH.
- ⑩ IN A SINGLE PRIME CONTRACT, IT IS THE RESPONSIBILITY OF THE PRIME CONTRACTOR TO COORDINATE BETWEEN THE ELECTRICAL AND OTHER TRADES.



5 - ROUND/RECTANGULAR DUCT FITTING DETAILS

NOT TO SCALE

RECORD DRAWING

These Record Documents have been prepared based on information provided by others. The Engineer has not verified the accuracy and/or completeness of this information and shall not be the responsible for any errors or omissions which may be incorporated herein as a result.

Dated: 2017-10-13

By:

10.13.17
RECORD DRAWINGS
REVISIONS
Revised By:
Revised Date:

CBHF
Engineers, PLLC

Phone: 910.791.4000
Fax: 910.791.5266
www.cbhfenr.com

2246 Yaupon Drive
Wilmington, NC 28401

© Copyright 2017 CBHF Engineers, PLLC



UNIVERSITY OF NORTH CAROLINA WILMINGTON
DOBO HALL LABS 117 AND 119 RENOVATIONS
601 S. COLLEGE ROAD, WILMINGTON, NORTH CAROLINA 28403
STATE ID#: 17-16875-01A

**MECHANICAL
DETAILS**

Job No.:	15250
Drawn:	GRM
Designed:	GRM
Checked:	DMH

Drawing No.:	M0.2
Revision:	0